

Minibeast homes (1)

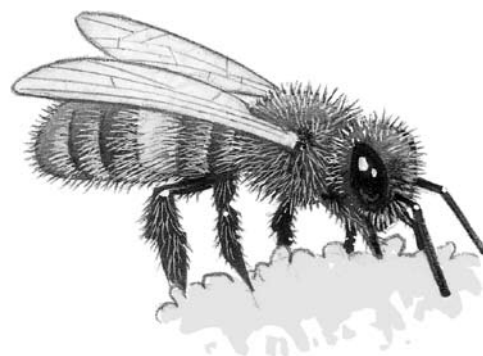
Home for lacewings and solitary bees – option 1

What you need

- Hollow bamboo or twigs (Buddleia stems are good)
- A container like an old coffee tin (washed – watch out for sharp edges!), sturdy clay flowerpot (with holes blocked up), or plastic cup
- Modelling clay
- String
- Sticky tape
- Scissors

What to do

- 1) Attach the string tightly to the side of the container. You can tie it around the outside of the container or ask an adult to help you make a hole in one side of the container and thread the string through with a knot on the inside. Add sticky tape to make sure the string is tied on tight.
- 2) Cover the inside bottom of the container with modelling clay.
- 3) Cut the hollow sticks slightly shorter than the height of the container and push them into the clay in the bottom of the container. Keep adding sticks until the container is full.
- 4) Now all you need is a tree or a post to hang your home from. Make sure that the container faces south and that it hangs on its side in full sunlight. The open end of the container needs to slope down slightly when hanging up to stop the lacewings and bees from getting wet.
- 5) Remember to dispose of the container carefully when it is no longer any use.



Minibeast homes (2)

Home for lacewings and solitary bees – option 2

What you need

- Handful of bamboo sticks or reeds (different-sized bamboo will attract the greatest variety of minibeasts but whatever you use must be hollow)
- String

What to do

- 1) Gather the bamboo together and wrap the string around the centre to tie all the pieces together. Leave some of the string hanging, as this will be used to hang up the home.
- 2) Find a quiet place outside for your hollow home where the minibeasts will not be disturbed and hang it up.



Earwig shelter

What you need

- Terracotta flowerpot or old coffee tin
- Dry fresh straw
- Wooden cane/pole

What to do

- 1) Fill the flowerpot/coffee tin with straw. Watch out for sharp edges on the container. Push in as much straw as you can. This will keep the minibeasts cosy and dry.
- 2) Turn the flowerpot/coffee tin upside down and stick it on top of the wooden cane/pole so it won't fall off.
- 3) Place the shelter in a quiet area outside, where the minibeasts will not be disturbed.

