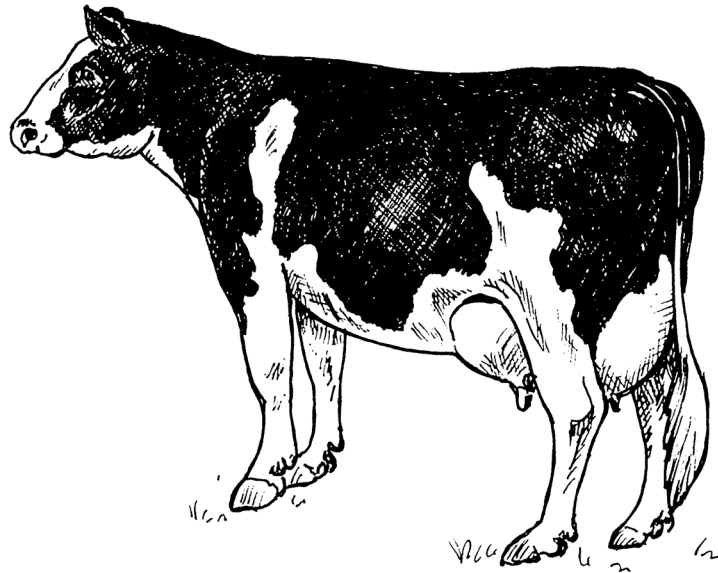
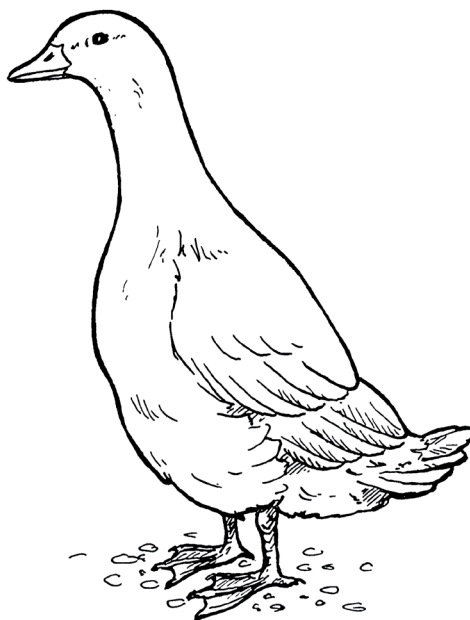


# Mae gen i... (buwch)



# Mae gen i... (hwyaden)

taflen waith



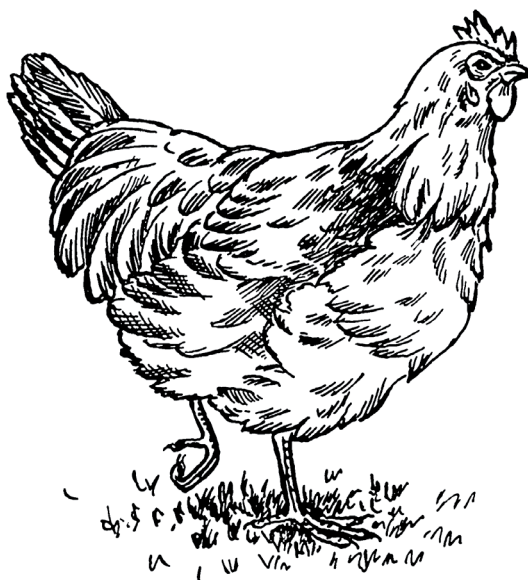
addysg  
*partneriaid mewn dysg*

Gellir llungopio

[www.rspca.org.uk/education](http://www.rspca.org.uk/education)

# Mae gen i... (iâr)

taflen waith



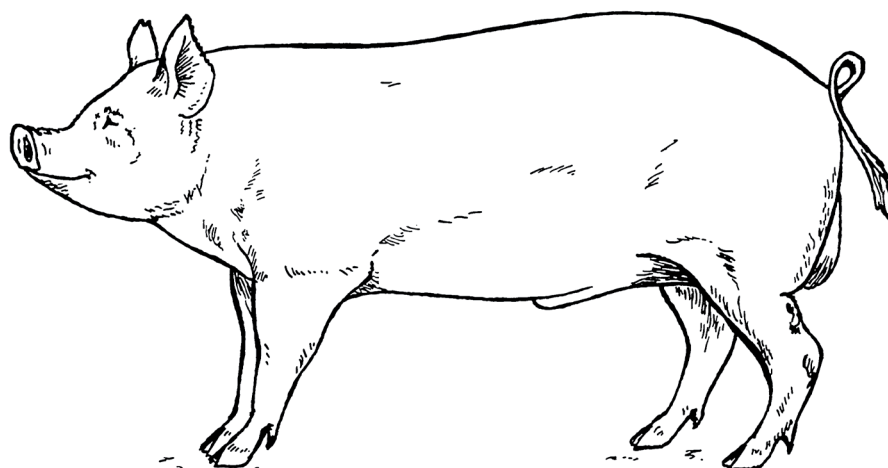
addysg  
*partneriaid mewn dysg*

Gellir llungopio

[www.rspca.org.uk/education](http://www.rspca.org.uk/education)

# Mae gen i... (mochyn)

taflen waith



addysg  
*partneriaid mewn dysg*

Gellir llungopio

[www.rspca.org.uk/education](http://www.rspca.org.uk/education)

# Mae gen i... (dafad)

